

BEGIN R/W PROJECT
STA. 0+00.00-
END Q SURVEY
STA. 2160+08.95 BK.
SECTION NO. 16320-2402

P.I. STA. 2147+69.66
Δ = 10°20'20" LT.
D = 0°30'00"
T = 1036.70'
L = 2067.78'
R = 11,459.16'
P.C. STA. 2137+32.96
P.T. STA. 2158+00.74

BEARING EQUATION
N39°40'35"E AHEAD
N39°50'54"E BACK
SECTION NO. 16320-2402

Q SURVEY
STA. 7+00.00
INTERSTATE NO. 4
Q SURVEY
STA. 0+00.00
COUNTY ROAD NO. 532

END SURVEY
STA. 12+91.62

END R/W PROJECT
STA. 37+01.94

SECTION 33, TOWNSHIP 25 SOUTH, RANGE 27 EAST

COUNTY ROAD NO. 532 AT INTERSTATE NO. 4 INTERCHANGE

RIGHT OF WAY MAP

OSCEOLA COUNTY

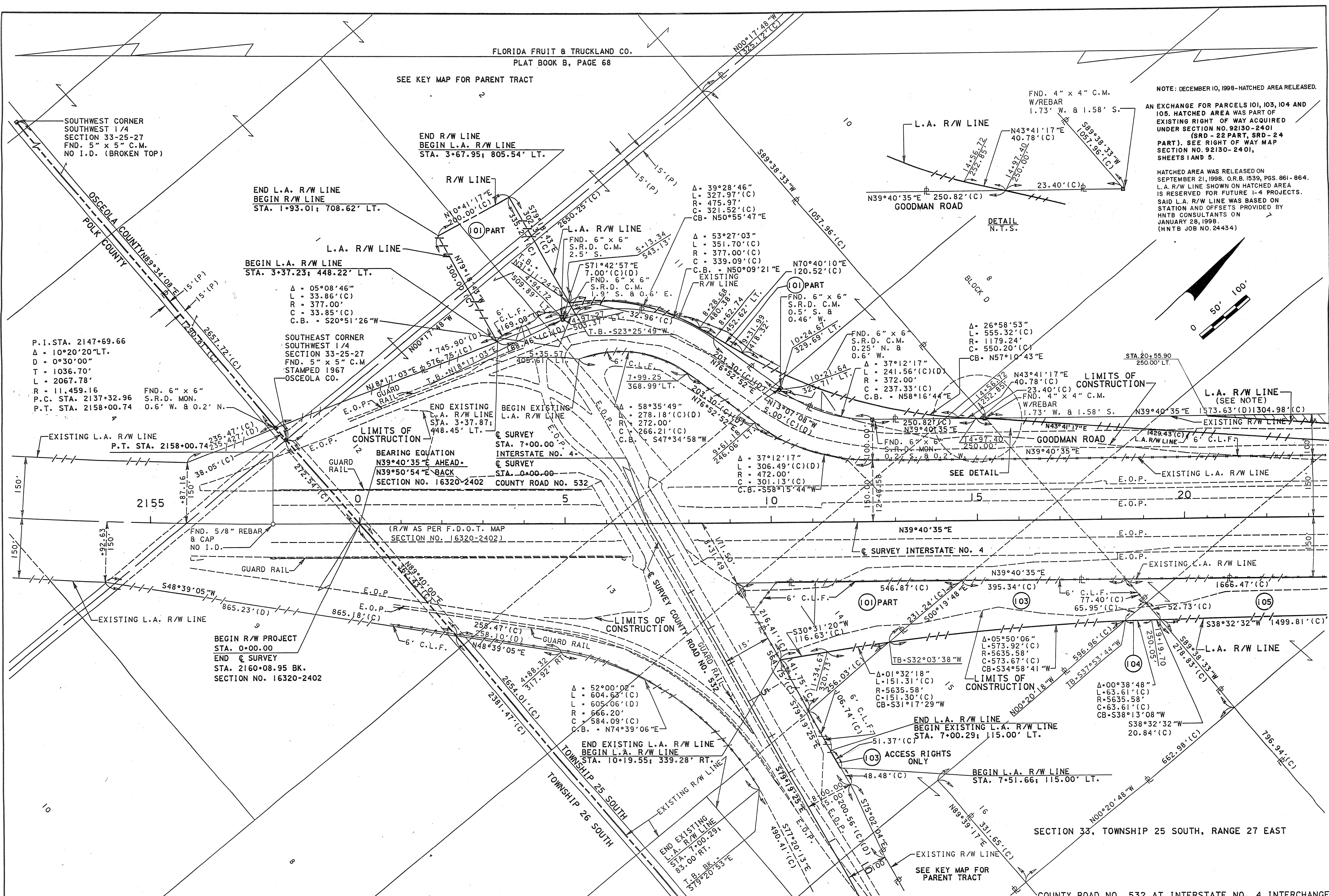
APPROVED BY	DATE	ADDED L.A. R/W LINE	S. WALKER	12-23-98	PRELIM	C. WHITE	5/12/95	F.A. PROJECT NO. 92130-2421	DEC 28 1998	MAPS PREPARED BY	FIELD BOOK NO. 15
CHAIRMAN-BOARD OF COUNTY COMMISSIONERS		AND HATCHING	K. Johns	2-13-98	FINAL	A. SCHAEFER	5/12/95			DYER, RIDDLE, MILLS & PRECOURT, INC.	94/24 94/25 95/3
CLERK OF CIRCUIT COURT	REVISION	BY	DATE	REVISION	BY	DATE	CHECKED	D. BARTON	5/12/95	W.P.I. NO. 5147340	SCALE 1"=200'
								COUNTY ROAD NO. 532	OSCEOLA COUNTY	SECTION 92130-2421	SHEET 2 OF 6

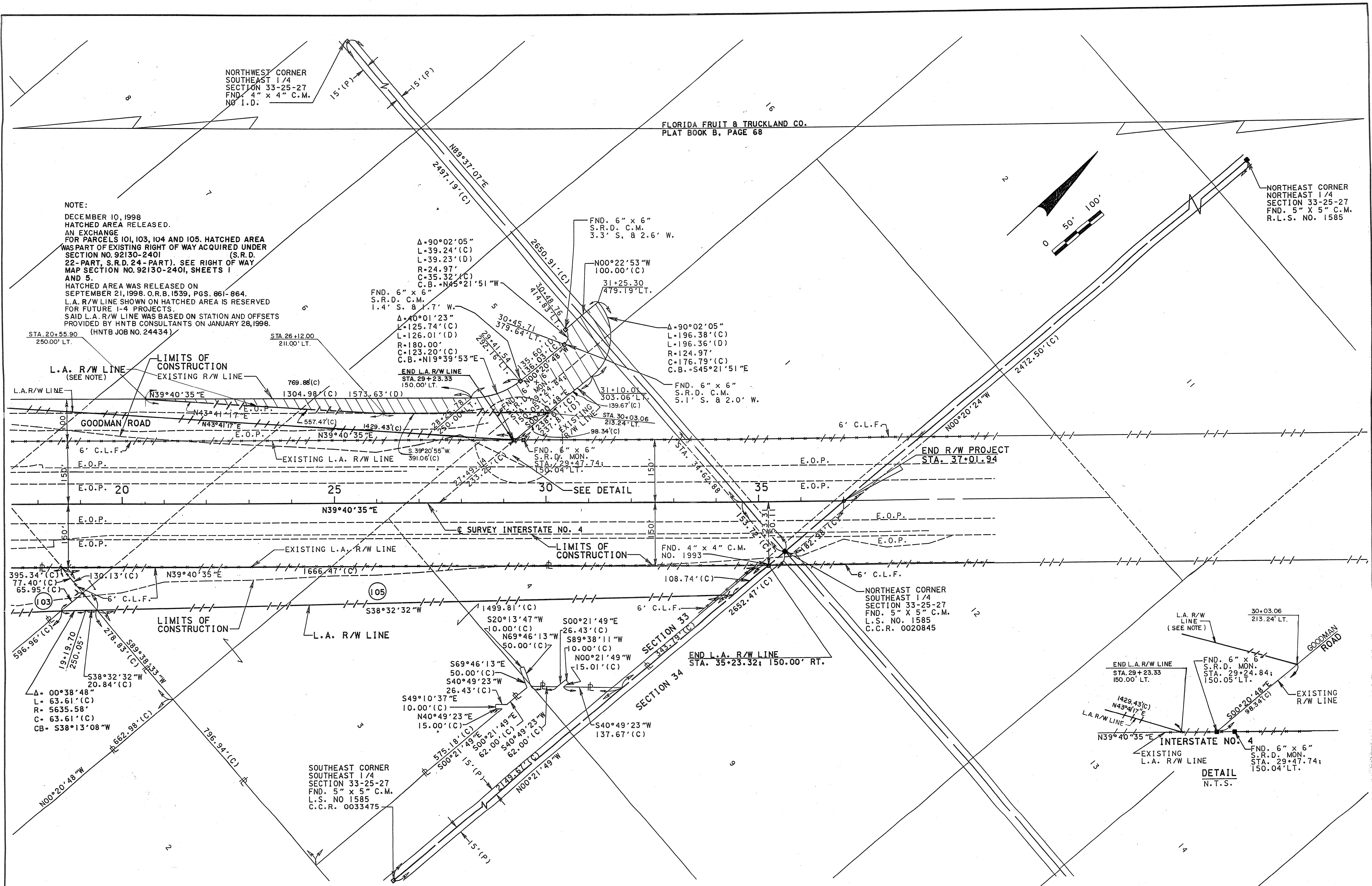
SEE KEY MAP FOR PARENT TRACT

NOTE: DECEMBER 10, 1998 - HATCHED AREA RELEASED.

AN EXCHANGE FOR PARCELS 101, 103, 104 AND 105. HATCHED AREA WAS PART OF EXISTING RIGHT OF WAY ACQUIRED UNDER SECTION NO. 92130-2401 (SRD - 22 PART, SRD - 24 PART). SEE RIGHT OF WAY MAP SECTION NO. 92130-2401, SHEETS 1 AND 5.

HATCHED AREA WAS RELEASED ON SEPTEMBER 21, 1998. O.R.B. 1539, PGS. 861-864. L.A. R/W LINE SHOWN ON HATCHED AREA IS RESERVED FOR FUTURE I-4 PROJECTS. SAID L.A. R/W LINE WAS BASED ON STATION AND OFFSETS PROVIDED BY HNTB CONSULTANTS ON JANUARY 28, 1998. (HNTB JOB NO. 24434)





NOTE:
DECEMBER 10, 1998
HATCHED AREA RELEASED.
AN EXCHANGE
FOR PARCELS 101, 103, 104 AND 105. HATCHED AREA
WAS PART OF EXISTING RIGHT OF WAY ACQUIRED UNDER
SECTION NO. 92130-2401 (S.R.D.
22-PART, S.R.D. 24-PART). SEE RIGHT OF WAY
MAP SECTION NO. 92130-2401, SHEETS 1
AND 5.
HATCHED AREA WAS RELEASED ON
SEPTEMBER 21, 1998. O.R.B. 1539, PGS. 861-864.
L.A. R/W LINE SHOWN ON HATCHED AREA IS RESERVED
FOR FUTURE I-4 PROJECTS.
SAID L.A. R/W LINE WAS BASED ON STATION AND OFFSETS
PROVIDED BY HNTB CONSULTANTS ON JANUARY 28, 1998.
(HNTB JOB NO. 24434)

FLORIDA FRUIT & TRUCKLAND CO.
PLAT BOOK B, PAGE 68

NORTHEAST CORNER
NORTHEAST 1/4
SECTION 33-25-27
FND. 5" X 5" C.M.
R.L.S. NO. 1585

NORTHWEST CORNER
SOUTHEAST 1/4
SECTION 33-25-27
FND. 4" X 4" C.M.
NO. 1.D.

STA. 20+55.90
250.00' LT.

STA. 26+12.00
211.00' LT.

FND. 6" X 6"
S.R.D. C.M.
3.3' S. & 2.6' W.

Δ=90°02'05"
L=196.38'(C)
L=196.36'(D)
R=124.97'
C=176.79'(C)
C.B.=S45°21'51"E

Δ=90°02'05"
L=39.24'(C)
L=39.23'(D)
R=24.97'
C=35.32'(C)
C.B.=N45°21'51"W

FND. 6" X 6"
S.R.D. C.M.
1.4' S. & 1.7' W.

FND. 6" X 6"
S.R.D. C.M.
5.1' S. & 2.0' W.

END L.A. R/W LINE
STA. 29+23.33
150.00' LT.

FND. 6" X 6"
S.R.D. C.M.
5.1' S. & 2.0' W.

FND. 4" X 4" C.M.
NO. 1993

NORTHEAST CORNER
SOUTHEAST 1/4
SECTION 33-25-27
FND. 5" X 5" C.M.
L.S. NO. 1585
C.C.R. 0020845

L.A. R/W LINE
(SEE NOTE)

END L.A. R/W LINE
STA. 29+23.33
150.00' LT.

FND. 6" X 6"
S.R.D. MON.
STA. 29+24.84;
150.05' LT.

END L.A. R/W LINE
STA. 29+24.84;
150.05' LT.

EXISTING
L.A. R/W LINE

DETAIL
N.T.S.

SOUTHEAST CORNER
SOUTHEAST 1/4
SECTION 33-25-27
FND. 5" X 5" C.M.
L.S. NO. 1585
C.C.R. 0033475

SECTION 33, TOWNSHIP 25 SOUTH, RANGE 27 EAST

COUNTY ROAD NO. 532 AT INTERSTATE NO. 4 INTERCHANGE

RIGHT OF WAY MAP

OSCEOLA COUNTY

APPROVED BY	DATE			ADDED L.A. R/W LINE	S. WALKER	12-23-98		BY	DATE	
-----				S. RECORDING DATA						
CHAIRMAN-BOARD OF COUNTY COMMISSIONERS				Revised Transfer Note	K. Johns	2-20-98	PRELIM	G. ROCHE	5/12/95	
				Revised Transfer	K. Johns	2-13-98				
				ADDED TRANSFER NOTE	S. WALKER	2-6-97	FINAL	A. SCHAEFER	5/12/95	
CLERK OF CIRCUIT COURT		REVISION	BY	DATE	REVISION	BY	DATE	CHECKED	D. BARTON	5/12/95

BY	DATE	F.A. PROJECT NO. 92130-2421	DEC 28 1998
PRELIM	G. ROCHE	5/12/95	
FINAL	A. SCHAEFER	5/12/95	
CHECKED	D. BARTON	5/12/95	
STATE ROAD NO. 532	OSCEOLA COUNTY	SECTION 92130-2421	SHEET 4 OF 6

